

MCK Series



- 5mm PIXEL PITCH
- 7mm PIXEL PITCH
- 10mm PIXEL PITCH
- 15mm PIXEL PITCH
- LIGHTWEIGHT
- IP65
- LOW NOISE
- WIDEVIEW
- HIGH CONTRAST
- CURVEABLE
- TV MODE
- FCC EMI5 US & EU CERTIFIED

CE Certified, lightweight, silent, AV rental modules with Image Optimisation Technology (IOT), perfect for low brightness applications.

Video WallTronics • 22 Lukens Drive • New Castle, Delaware • 302-328-4511
www.rentbigscreens.com • www.videowalltronics.com

MODULE SPECIFICATIONS - MCK Series

		MCK5SLRi	MCK5SLR	MCK7SLR	MCK10SLR	MCK15SLR
LEDS						
LEDs Per Pixel				1R1G1B		
Red Wavelength [Dominant]	nm			620		
Green Wavelength [Dominant]	nm			520		
Blue Wavelength [Dominant]	nm			465		
LED Type						
PIXELS						
Pixel Configuration				3-in-1		
LEDs Per Area	LED/m ²	110,592	84,672	49,152	27,648	12,288
Physical Pixel Pitch	mm	5.2	5.95	7.81	10.4	15.63
Physical Pixel Resolution [Width]	pixels	96	84	64	48	32
Physical Pixel Resolution [Height]	pixels	96	84	64	48	32
Physical Pixel Resolution [Total]	pixels	9,216	7,056	4,096	2,311	1,024
Physical Pixels Per Area	pixels/m ²	36,864	28,224	16,384	9,216	4,096
MODULE						
Active Module Width	mm			500		
Active Module Height	mm			500		
Active Module Area	m ²			0.25		
Module Depth	mm			115		
Module Weight	kg			<10		
LED Tile Width	mm			500		
LED Tile Height	mm			125		
Viewing Angle - Horizontal	degrees	160	160	160	160	120
Viewing Angle - Vertical	degrees	145	145	145	145	120
Ingress Protection (Front)		IP31	IP65	IP65	IP65	IP65
Ingress Protection (Back)		IP31	IP65	IP65	IP65	IP65
Cabinet Material and Surface Finish				Aluminium		
Storage Temperature Range	degree C	-20 to +45	-20 to +45	-20 to +45	-20 to +45	-20 to +45
Operating Temperature Range	degree C	-20 to +45	-20 to +45	-20 to +45	-20 to +45	-20 to +45
Operating Humidity Range	%			10 to 95 Non-condensing		
COLOUR						
Processing Depth	colours			16bit		
Refresh Rate	Hz	2,400	2,400	2,400	960	960
BRIGHTNESS						
Brightness [After Calibration]	nits	2,200	4,800	5,500	5,500	5,500
Brightness Control	*			Auto/Manual		
POWER						
Input Voltage	VAC	110/220	110/220	110/220	110/220	110/220
Input Power [Average]	watts	65	65	65	65	150
Input Power [Maximum]	watts	200	200	200	200	300
OTHER						
Lifespan	hours			100,000		
Computer System Type				PC Win7, Vista, XP		
Video Input				DVI, HDMI		
Connectors				Neutrik powerCON TRUE 1		
MODULE FACE CHARACTERISTICS						
Curveable		No	No	Yes	Yes	Yes
Non Curveable		Yes	Yes	Yes	Yes	Yes
Mesh (see through)		No	No	Yes	Yes	Yes
Solid		Yes	Yes	Yes	Yes	Yes
Certification				TÜV, CE, FCC		

* Additional sensor needed for Auto

All specifications are correct at time of print, however they are liable to change and should be confirmed at point of order.

A creative solution

Make it big, make it bold – whether you want a dynamic video backdrop, dramatic lighting effects or curved video displays, digiLED MCK offers a range of pixel pitches to give your shows the wow factor!

With the ability to produce a smooth curve with a 4m diameter, and options for hanging and stacking screen builds for super fast installations, the MCK range is all geared up for the rental market.

IOT - TV Mode

Developed for TV and concert touring applications, digiLED's Image Optimisation Technology (IOT) ensures high quality image reproduction in any situation. The powerful new processing system maintains full 16 bit depth whatever the brightness, for images free of contouring and quantising, with perfect greyscale transition. Further IOT firmware configurations are preset for frequently used situations, whether the job demands maximum refresh rate, brightness or super smooth greyscales.

All you need for the events market

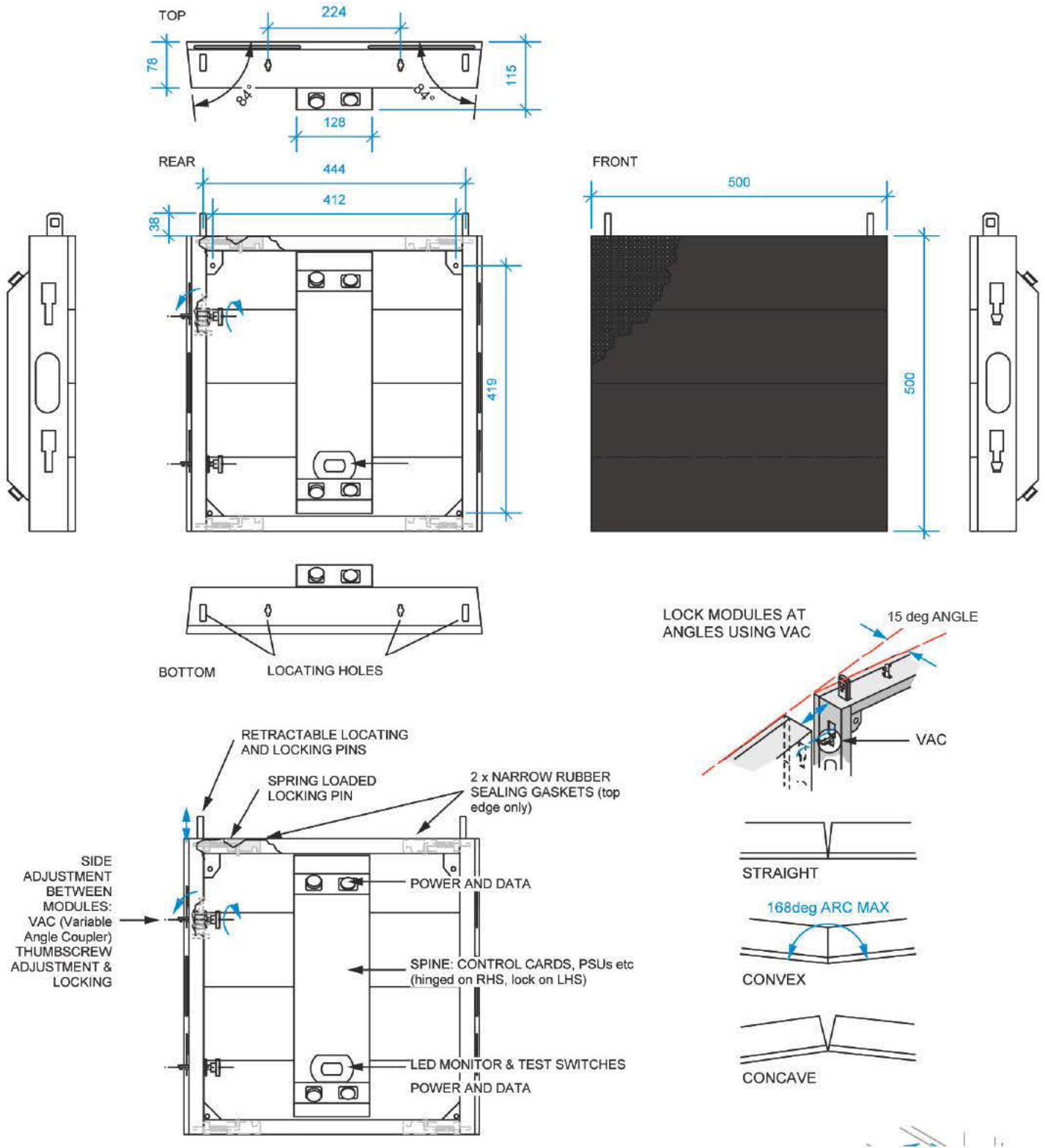
- TV Mode for low brightness applications
- Lightweight at under 10Kg or less per module
- Indoor & outdoor applications
- Super quiet
- Options for curve 15° per module (max)
- IP65 rated (outdoor versions)
- Stacking & hanging system
- Programmable refresh up to 2,400Hz
- CE, EMC, FCC approved models
- Compatible mechanics on all models
- Fast-rig system
- Slim at 115mm depth



Standard system accessories

- digiLED Navigator screen interface
- Flight cases
- digiPRO & PRO HD processors
- Hanging bars
- Stacking system

MODULE DIMENSIONS - MCK Series



MODULE DIMENSIONS - MCK Series

