

# The 'IT' TILE next generation discrete & SMD LED screens



**digiLED**

CE & UL certified fixed installation LED tiles with intelligent remote diagnostics for DOOH, stadia and screen spectacular applications



## Introducing the 'IT' TILE

The all new 'IT' TILE has been designed specifically for the fixed installation and DOOH advertising market. The TILE is based on a 320mm x 320mm, IP67 platform that can be pre-built into super-sized modules weighing in at under 44kg per square metre for speedy installation. User friendly options include front access maintenance and remote diagnostics with fault detection down to pixel level.

### All you need for the fixed installation market

- Remote diagnostics with email/SMS reporting option
- IP67 protection
- Radiant calibrated system
- Choice of Nichia & Everlight LEDs
- Front access maintenance options
- Lightweight and slim to reduce installation costs
- Super-sized modules for quick and easy installation
- CE & UL certification

# The 'IT' TILE next generation discrete & SMD LED screens



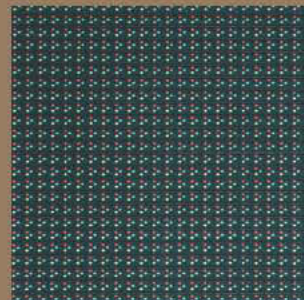
CE & UL certified fixed installation LED tiles with intelligent remote diagnostics for DOOH, stadia and screen spectacular applications

	Discrete LED				SMD LED		
Model	IT13	IT16	IT20	IT26	IT10	IT13	IT16
<b>Tile information</b>							
Pixel pitch (mm)	13.3	16	20	26.6	10	13.3	16
Pixel configuration	1R1G1B				3 in1 SMD		
Resolution of tile (w x h)	24 x 24	20 x 20	16 x 16	12 x 12	32 x 32	24 x 24	20 x 20
Size of tile (mm) (w x h)	320 x 320						
Weight of tile (kg)	2.7						
<b>Standard module information</b>							
Size of standard module (mm, w x h)	1,280 x 320						
Resolution of standard module (pixel, w x h)	96 x 24	80 x 20	64 x 16	48 x 12	128 x 32	96 x 24	80 x 20
Weight of standard module	18kg with power supply and accessories						
<b>Example super-sized module</b>							
Example super-sized module (mm, w x h)	2,560 x 1,600						
Example super-sized module (pixels w x h)	192 x 120	160 x 100	128 x 80	96 x 60	256 x 160	192 x 120	160 x 100
Weight for example super-sized module (kg)	180kg with power supply and accessories (44kg per m <sup>2</sup> )						
<b>System information</b>							
Resolution (pixels/m <sup>2</sup> )	5,625	3,906	2,500	1,406	10,000	5,625	3,906
Max power consumption (watts/m <sup>2</sup> )	732				1,098		
Average power consumption (watts/m <sup>2</sup> )	300				440		
Front access maintenance	Yes				No	Yes	
Brightness (NITS)	6,000				>5,000		
Viewing angle to 50% brightness	110° / 45°				120°/120°		
Power input	AC110V / 220V +/- 10%						
Frame frequency (Hz)	60						
Refresh frequency (Hz)	>720						
Brightness control	Auto and manual available						
Nominal LED work life	Up to 100,000 hours						
Video input	DVI, VGA, S-Video, YPrPb, SD/HD-SDI, HDMI, CVBS						
IP rating	IP67 (module), IP54 (power box)						
Pixel calibration	Yes						
Pixel diagnosis	Yes, optional						
Power & signal back up	Yes, optional						

All specifications are correct at time of print, however they are liable to change and should be confirmed at point of order.

## Standard system accessories

- digiLED Navigator screen interface
- digiPRO & PRO HD processors
- digiAD content management system
- digiSPORT content management system



# The 'IT' TILE

## next generation LED screens



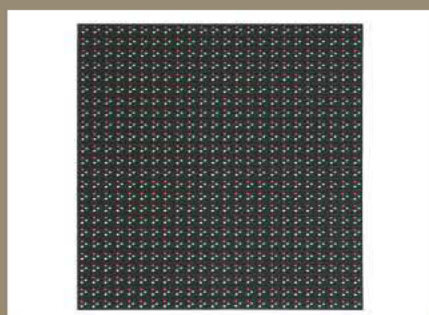
CE & UL certified fixed installation LED tiles for DOOH, stadia and screen spectacular applications

Model	IT13D	IT16D	IT20D	IT26D
Pixel pitch (mm)	13.3	16	20	26.7
Pixel configuration	1R1G1B			
Resolution of tile (H x W)	24 x 24	20 x 20	16 x 16	12 x 12
Size of tile (mm) (H x W)	320 x 320			
Weight of tile (kg)	2.7			
Example super-sized module (mm)( H x W)	2560 x 1600			
Example super-sized module (pixels)( H x W)	192 x 120	160 x 100	128 x 80	96 x 60
Weight of example module (kg)	180kg with power supply and accessories			
Resolution (pixels / m <sup>2</sup> )	5,625	3,906	2,500	1,402
Power consumption per m <sup>2</sup> max (W)	730			
Power consumption per m <sup>2</sup> average (W)	300			
Brightness (NITS)	6,000			
View ng angle to 50% brightness	±110° / 45°			
Power input	AC110V / 220V +/- 10%			
Frame frequency (Hz)	±60			
Refresh frequency (Hz)	±1,000			
Brightness control	Auto and manual available			
Nominal LED work life	Up to 100,000 hours			
Video input	DVI, VGA, S-Video, YPrPb, SD/HD-SDI, HDMI, CVBS			
Ingress protection	IP67 (tile), IP54 (power box)			
Pixel calibration	Yes			
Pixel diagnosis	Yes as option			
Power & signal back up	Available			

All specifications are correct at time of print, however they are liable to change and should be confirmed at point of order.

## Standard system accessories

- digiLED Navigator screen interface
- digiPRO & PRO HD processors
- digiAD content management system
- digiSPORT content management system



**MODULE SPECIFICATIONS - digiLED IT20N**

	<b>Unit</b>	<b>Value</b>
<b>LEDS</b>		
LEDs Per Pixel		3
Red Wavelength (Dominant)	nm	620
Green Wavelength (Dominant)	nm	520
Blue Wavelength (Dominant)	nm	465
LED Type	546	Nicha
<b>PIXELS</b>		
Pixel Configuration		1R1G1B
LEDs Per Area	LED/m <sup>2</sup>	7,500
Physical Pixel Pitch	mm	20
Physical Pixel Resolution (Width)	pixels	64
Physical Pixel Resolution (Height)	pixels	16
Physical Pixel Resolution (Total)	pixels	1,024
Physical Pixels Per Area	pixels/m <sup>2</sup>	2,500
Effective Pixel Pitch	mm	10
Effective Pixel Resolution (Width)	pixels	128
Effective Pixel Resolution (Height)	pixels	32
Effective Pixel Resolution (Total)	pixels	4,096
Effective Pixels Per Area	pixels/m <sup>2</sup>	10,000
<b>MODULE</b>		
Active Module Width	mm	1,280
Active Module Height	mm	320
Active Module Area	m <sup>2</sup>	0.410
Module Depth	mm	203
Module Weight	kg	18.00
Viewing Angle - Horizontal	degrees	120
Viewing Angle - Vertical	degrees	60
Ingress Protection (Front)		67
Ingress Protection (Back)		54
Cabinet Material and Surface Finish		Aluminum
Storage Temperature Range	degree C	-40 to +85
Operating Temperature Range	degree C	-10 to +50
Operating Humidity Range	%	10 to 95 non-condens
<b>COLOUR</b>		
Processing Depth	colours	16
Refresh Rate	hz	1,000
<b>BRIGHTNESS</b>		
Brightness after calibration	nits	6,000
Brightness Control	*	Auto/Manual
<b>POWER</b>		
Input Voltage	VAC	100/250
Input Power (Frequency)	hz	50/60
Input Power (Average)	watts	123
Input Power (Maximum)	watts	300
Brand of Power Supply		Meanwell
<b>OTHERS</b>		
Lifespan	hours	100,000
* Additional sensor needed for Auto		

All specifications are subject to change without prior notification.